



Application

General heating/cooling and heat recovery; operates with liquid/liquid and steam/liquid media.

Working Principle

The heating surface consists of a number of corrugated channel plates clamped together in a frame and sealed at the edges by means of gaskets.

The plates have ports at the corners, and the gaskets are so arranged that the two media of the heat transfer process flow through alternate spaces between plates. The flow pattern is generally chosen so the two media are flowing in opposite directions, countercurrent flow.

One unit housed in a single frame can be made to perform several separate functions through the insertion of connecting plates with interchangeable connections into the plate pack to divide it into sections.

The frame consists of a frame head, an upper carrying bar, a lower guide bar, and a support column. The plates are suspended from and aligned by the carrying and guide bars, small plate packs without and big packs with hangers.

The pressure plate and connection plates are suspended from the upper carrying bar. The plate pack is clamped between the frame head and the pressure plate by means of ten bolts.

The two media are sealed against one another in such a way that a leakage space open only to the surrounding atmosphere has been created. Thus mixing of the two media in case of leakage has been completely eliminated. The gaskets are glued in the gasket tracks.

Basic Unit

Material

Frames,

VL – wall mounting, lacquered steel

Connection Plates. Steel, clad in stainless steel

Plates. Stainless steel AISI 316; other materials optional

Gaskets. Nitrile rubber, butyl rubber; other materials optional

Technical Data

Plates	
Actual heating surface	0.12 m ²
Overall dimensions	710x250 mm
Thickness (uncorrugated)	0.6 mm
Weight, incl gasket	0.88 kg
Flow path volume	0.35 l
Port size	70 mm

Connections

VL/VRL	50 mm SMS union
Connection plates	50 mm SMS union
(Other union standard on request)	

Maximum working pressure

VL/VRL	1.0 MPa
--------	---------

Capacity

Pasteurization up to appr 8 000 l/h

Heating/cooling up to appr 40 000 l/h

Maximum capacity depends on temperature programme, permitted pressure drop, and type of liquid

Optional equipmt

Wrench

Thermometer

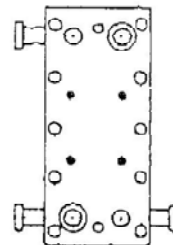
Partition plate, stainless steel (without holes)

Protective shielding

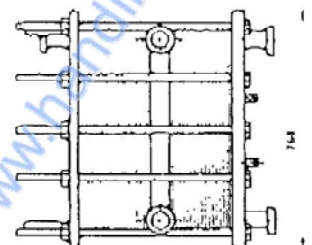
External holding cell, tubular type

External holding cell, spiral type

— 45 — 330 —



P2-VL/VRL



300-500



Handing ApS

Nordkranvej 5-9, Vassingerød

DK - 3540 Lyngø

Tel.: +45 48160166

www.handing.dk

Alfa-Laval P2-VL

Dette dokument er vejledende

Der tages forbehold for fejl.

This document is only guiding.

We make reservation for possible errors

Alle mål i mm.
Measures in mm

Lager nr.

A139