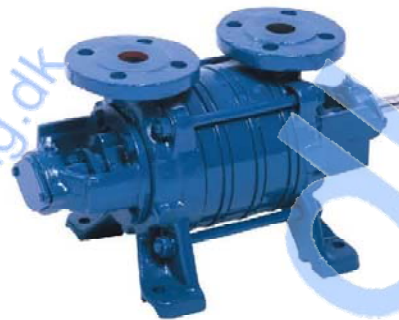


## Technical data

Capacity:	from 0,2 up to 35 m <sup>3</sup> /h
Head:	from 6 up to 144 m
Speed:	1450 rpm (max. 1800 rpm)
Temperature:	max. 120 °C
Casing pressure:	PN 16
Shaft sealing:	stuffing box or mechanical seal
Flange connections:	DIN 2501 / PN 16
Direction of rotation:	clockwise (when seen from the drive end)



## Application

The Sterling SIHI AKH pump is a self-priming side channel pump capable of handling gas along with the medium and operates at a low noise level. The AKH is suitable for trouble free handling of clean or turbid liquids without any abrasive particles.

The performance curve steepness admits a precise regulation of the pressure with a small change in capacity.

The AKH pump has been developed for a broad range of medium duty applications in:

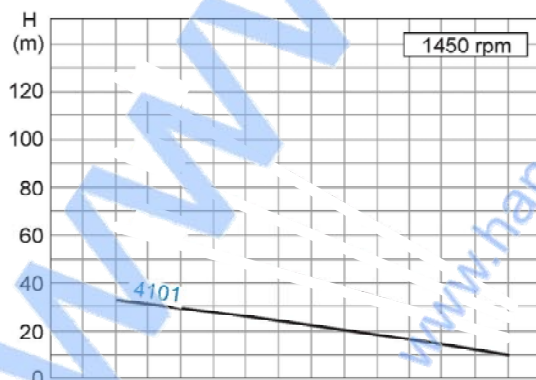
- Chemical industry,
- Petro-Chemical industry,
- Oil industry,
- Machinery and automobile industry ,
- Food industry,
- Building trades,
- Plastic and rubber industry,
- Surface treatment,
- Ship yards.

## Design

Pumps of the series AKH have a segmental type construction with open vane wheel impellers. The pump construction is either with one liquid surrounded slide bearing and one ball bearing or in a more industrial construction by using a double ball bearing design.

The program comprises 6 sizes with up to 4 stages (an extension with 5 or 6 stages is possible for certain sizes). The performance curves of the AKH are identical for all the material designs.

The applied hydraulic components are from our Modular Side Channel system (interchangeability of parts).



## Construction

### Casing pressure

Maximum 16 bar from -40 °C up to +120 °C.

### Please observe

Technical rules and safety regulations:

Casing pressure = inlet pressure + delivery head at minimum pump capacity.

### Position of branches

Suction and discharge branch point radially upwards.

### Flanges

The flanges correspond to DIN EN 1092-2 / PN 16. Flange design as per DIN 2512 with groove or drilled according to ANSI 150 or 300 lbs is basically possible.

### Bearing

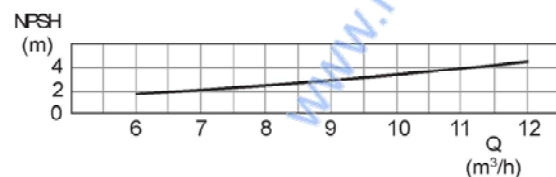
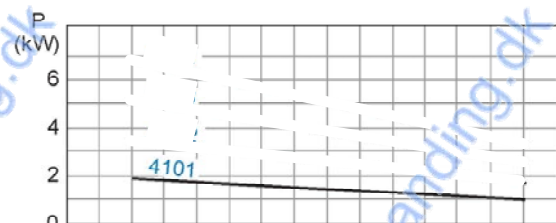
Either by one grease lubricated ball bearing and one liquid surrounded sleeve bearing (design A) or by two grease lubricated ball bearings (design B). The ball bearings are according to DIN 625. The first grease filling is done in the factory.

### Direction of rotation

Clockwise, when looking at the pump from the drive end. Anti-clockwise is possible.

### Shaft sealing

The shaft can be sealed by either a stuffing box or a standard mechanical seal.



**Handing ApS**  
 Nordkranvej 5-9, Vassingerød  
 DK - 3540 Lyngby  
 Tel.: +45 48160166  
[www.handing.dk](http://www.handing.dk)

## SIHI Type AKHK 4101

Dette dokument er vejledende  
 Der tages forbehold for fejl.  
 This document is only guiding.  
 We make reservation for possible errors

Alle mål i mm.  
 Measures in mm

Lager nr.  
**P237**