

Pump Data Sheet - INOXPA 50 Hz Pump Catalog



Pump:

Size: S-38
 Type: PROLAC
 Synch speed: 3000 rpm
 Curve: 4040357
 Specific Speeds:
 Dimensions:
 Speed: 2900 rpm
 Dia: 185 mm
 Impeller: 3013111
 nq: ---
 S: ---
 Suction: 100 mm
 Discharge: 65 mm

Search Criteria:

Flow: 45 m³/hr Head: 50 m

Fluid:

Water
 Density: 998.3 kg/m³
 Viscosity: 0.9946 cP
 NPSHa: ---
 Temperature: 20 °C
 Vapor pressure: 2.339 kPa a
 Atm pressure: 101.4 kPa a

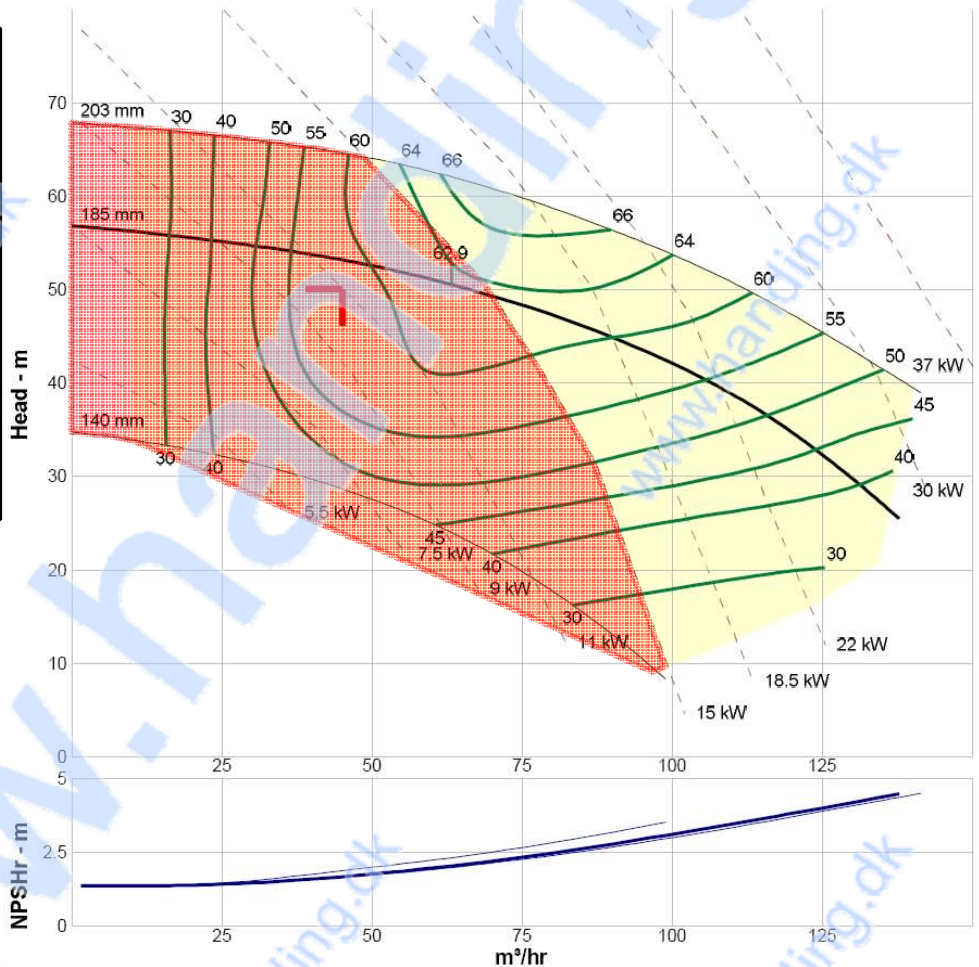
Motor:

Standard: IEC
 Enclosure: TEFC
 Sizing criteria: Design Point
 Size: 15 kW
 Speed: 3000
 Frame: 160MB

Pump Limits:

Temperature: 120 °C
 Pressure: 1600 kPa g
 Sphere size: ---
 Power: 55 kW
 Eye area: ---

--- Data Point ---	
Flow:	45 m³/hr
Head:	53.2 m
Eff:	58%
Power:	11.1 kW
NPSHr:	1.7 m
--- Design Curve ---	
Shutoff head:	56.8 m
Shutoff dP:	557 kPa
Min flow:	---
BEP:	63% @ 63.3 m³/hr
NOL power:	27.6 kW @ 138 m³/hr
-- Max Curve --	
Max power:	31.8 kW @ 141 m³/hr



Nonbinding data if it is not subject to INOXPA quotation / Datos no vinculantes si no están sujetos a una oferta de INOXPA

Performance Evaluation:

Flow m³/hr	Speed rpm	Head m	Efficiency %	Power kW	NPSHr m
54	2900	52	61	12.5	1.87
45	2900	53.2	58	11.1	1.7
36	2900	54.2	55	9.72	1.55
27	2900	55	45	8.92	1.46
18	2900	55.7	33	8.35	1.4



Handing ApS™
 Nordkranvej 5-9, Vassingerød
 DK - 3540 Lyngby
 Tel.: +45 48160166
 www.handing.dk

Inoxpa type S-38G

Alle mål i mm.
 All measures in mm.
 Dette dokument er vejledende.
 Der tages forbehold for fejl.
 This document is only guiding.
 We make reservation for possible errors.
 Copyright © By Handing ApS. All Rights Reserved.

Lager nr. **/NNJ**
PC9229